



3003 77TH AVE SE., MERCER ISLAND, WA 98049





© 2024 Google



**NATIONAL SIGN**  
CORPORATION

1541 S. 92nd Place, #B, Seattle, WA 98108  
P: 206-282-0700  
www.nationalsigncorp.com

This is an original unpublished drawing, created by National Sign Corporation. It is submitted for your personal use in connection with a project being planned for you by National Sign Corporation. It is not to be shown to anyone outside your organization, or to be used, reproduced, copied or exhibited in any fashion. Any usage beyond that granted to buyer herein shall require the separate payment of a design and engineering fee to National Sign Corporation.

**JOB INFORMATION:**

**Riot Games**  
3003 77TH AVE SE  
MERCER ISLAND, WA 98049

**REPRESENTATIVE:**

Tom Hubbard

**DESIGNER:**

Mark Mahan

**DATE:**

02/25/24

**DESIGN NUMBER:**

24-00386 V8 FP

**SCALE:**

As Noted

24-01764-05.1

**FINAL PRINT**

**CLIENT INFORMATION:**

**Riot Games**  
3003 77TH AVE SE  
MERCER ISLAND, WA 98049

**REPRESENTATIVE:**

Tom Hubbard

**DESIGNER:**

Mark Mahan

**DATE:**

02/25/24

**REVISION:**

1	
2	
3	
4	
5	
6	
7	
8	
9	

**REVIEWED BY:**

F	
C	
S	
P	

This is an original unpublished drawing, created by National Sign Corporation. It is not to be shown to anyone outside your organization, or to be used, reproduced, copied or exhibited in any fashion. Any usage beyond that granted to buyer herein shall require the separate payment of a design and engineering fee to National Sign Corporation.

SIGN(S) TO BE MANUFACTURED TO U.L. SPECIFICATIONS AND WILL BEAR THE U.L. LABEL(S). INSTALL IN ACCORDANCE WITH NATIONAL ELECTRICAL CODES.

**SCALE:** As Noted

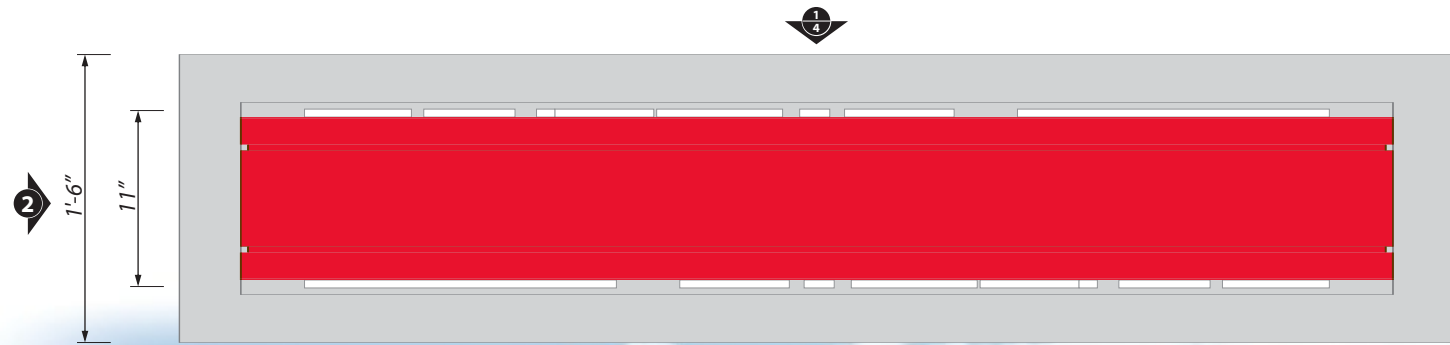
**DESIGN NUMBER:**

24-00386 V8 FP

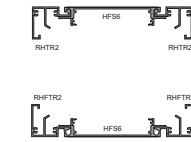
**JOB NUMBER:**

24-01764-OS.1

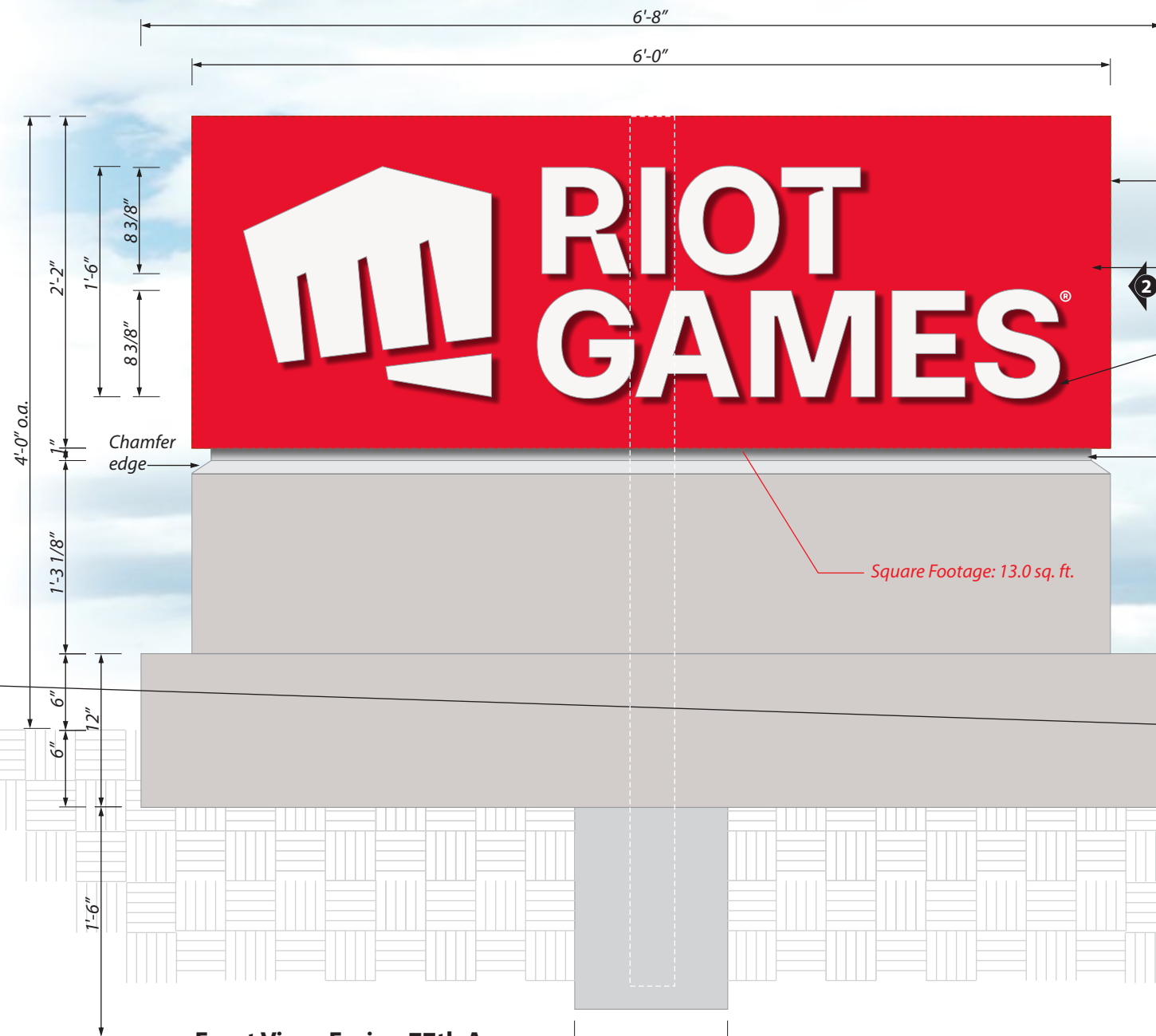
**FINAL PRINT**



**3 Plan View**  
Scale: 1"=1'-0"



**4 Extrusion Section**  
Scale: 1"=1'-0"

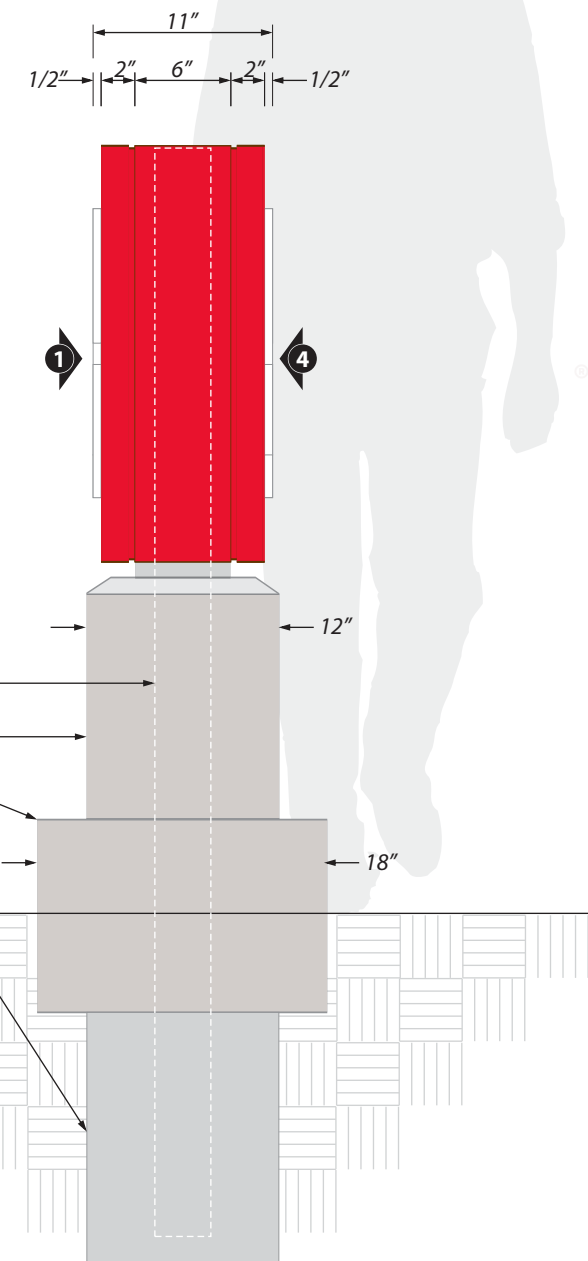


**1 Front View- Facing 77th Ave.**  
Scale: 1"=1'-0"

**Sign 1:**

**Manufacture & Install:**  
(1) Exterior double faced non-illuminated aluminum with routed and pushed thru acrylic monument sign.

- A** Sign cabinet to be extruded aluminum HFS-6 body, with RHTR-2, RHFTR-2 Retainers painted Red to match PMS#185c (satin finish).
- B** Sign face to be .090" aluminum painted Red to match PMS#185c (satin finish).
- C** Logo & "RIOT GAMES" lettering to be routed out of aluminum face and 3/4" thick pushed thru acrylic- Clear, painted White (satin finish). Register Mark to be first surface applied opaque 3M Scotchcal vinyl- White #220-10.
- D** Reveal to be aluminum framework over skinned with .090" aluminum painted Grey to match PMS#2330 (satin finish).
- E** Pipe to be 3" (3.5" o.d.) steel by NSC.
- F** Footing to be concrete by others.



**2 Side View**  
Scale: 1"=1'-0"

**CLIENT INFORMATION:**

**Riot Games**  
3003 77TH AVE SE  
MERCER ISLAND, WA 98049

**REPRESENTATIVE:**

Tom Hubbard

**DESIGNER:**

Mark Mahan

**DATE:**

02/25/24

**REVISION:**

1	
2	
3	
4	
5	
6	
7	
8	
9	

**REVIEWED BY:**

F	
C	
S	
P	

This is an original unpublished drawing, created by National Sign Corporation. It is not to be shown to anyone outside your organization, or to be used, reproduced, copied or exhibited in any fashion. Any usage beyond that granted to buyer herein shall require the separate payment of a design and engineering fee to National Sign Corporation.

SIGN(S) TO BE MANUFACTURED TO U.L. SPECIFICATIONS AND WILL BEAR THE U.L. LABEL(S). INSTALL IN ACCORDANCE WITH NATIONAL ELECTRICAL CODES.

**SCALE:** As Noted

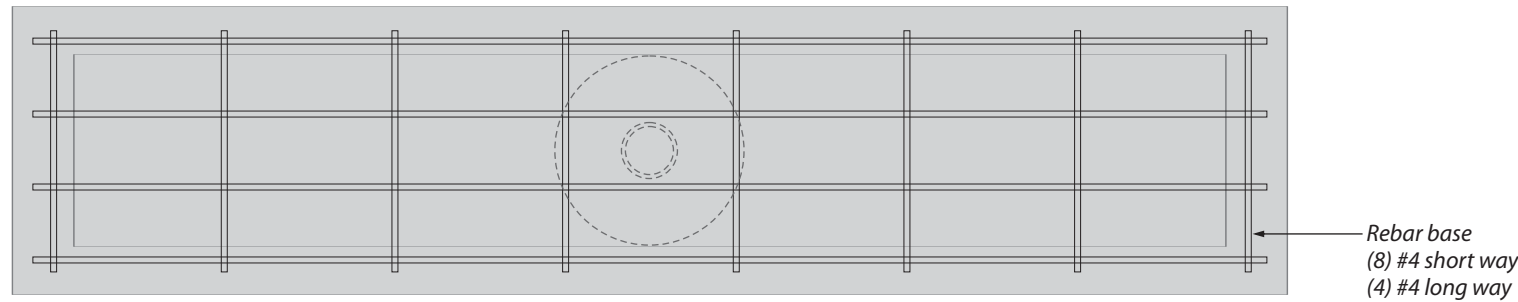
**DESIGN NUMBER:**

24-00386 V8 FP

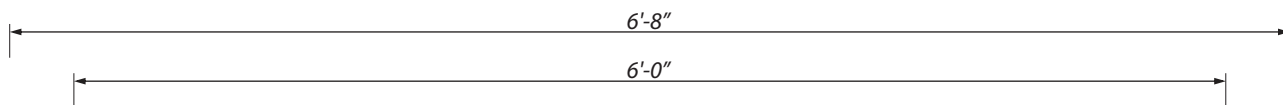
**JOB NUMBER:**

24-01764-OS.2

**FINAL PRINT**



**3 Plan View**  
Scale: 1"=1'-0"



**1 Back View- Facing Building**  
Scale: 1"=1'-0"

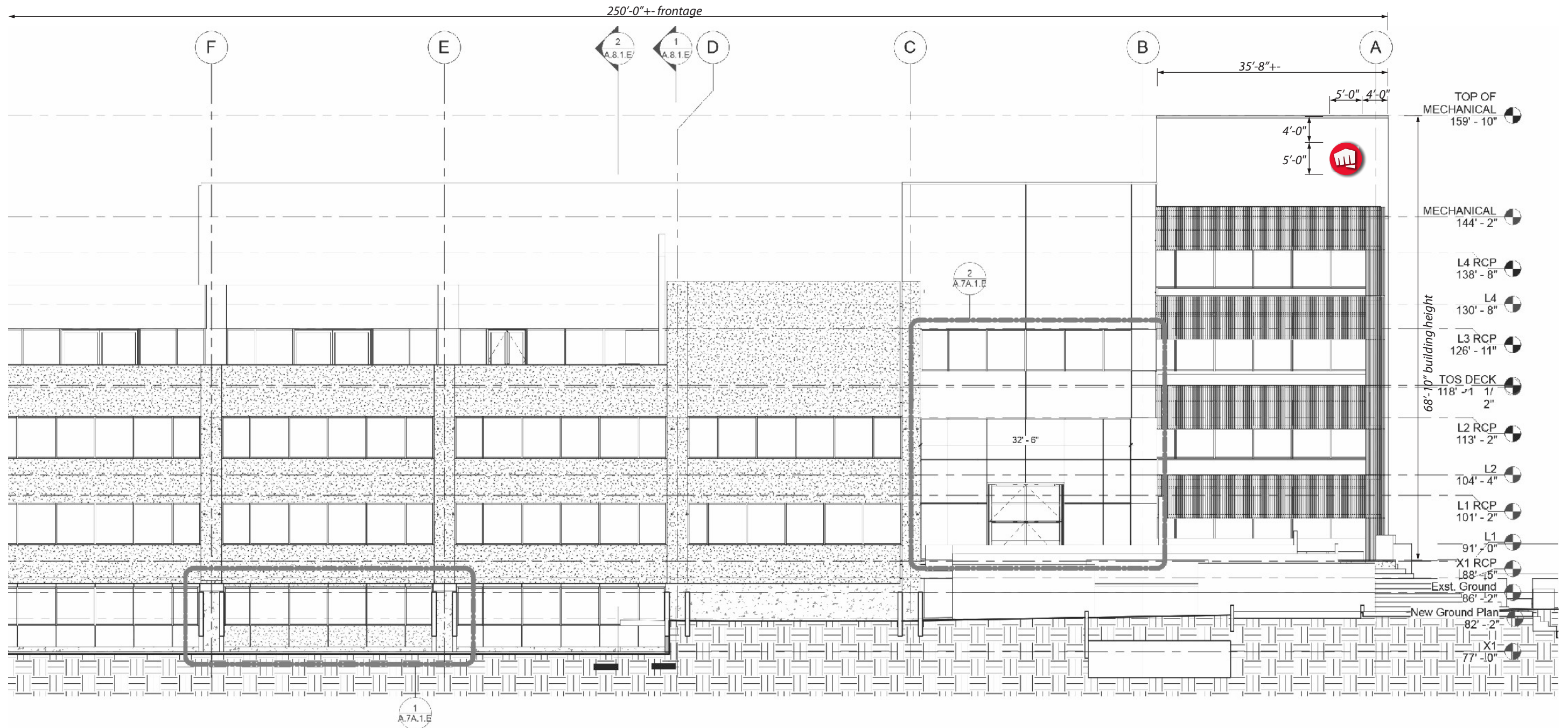
NOTE: Misspelling is intentional



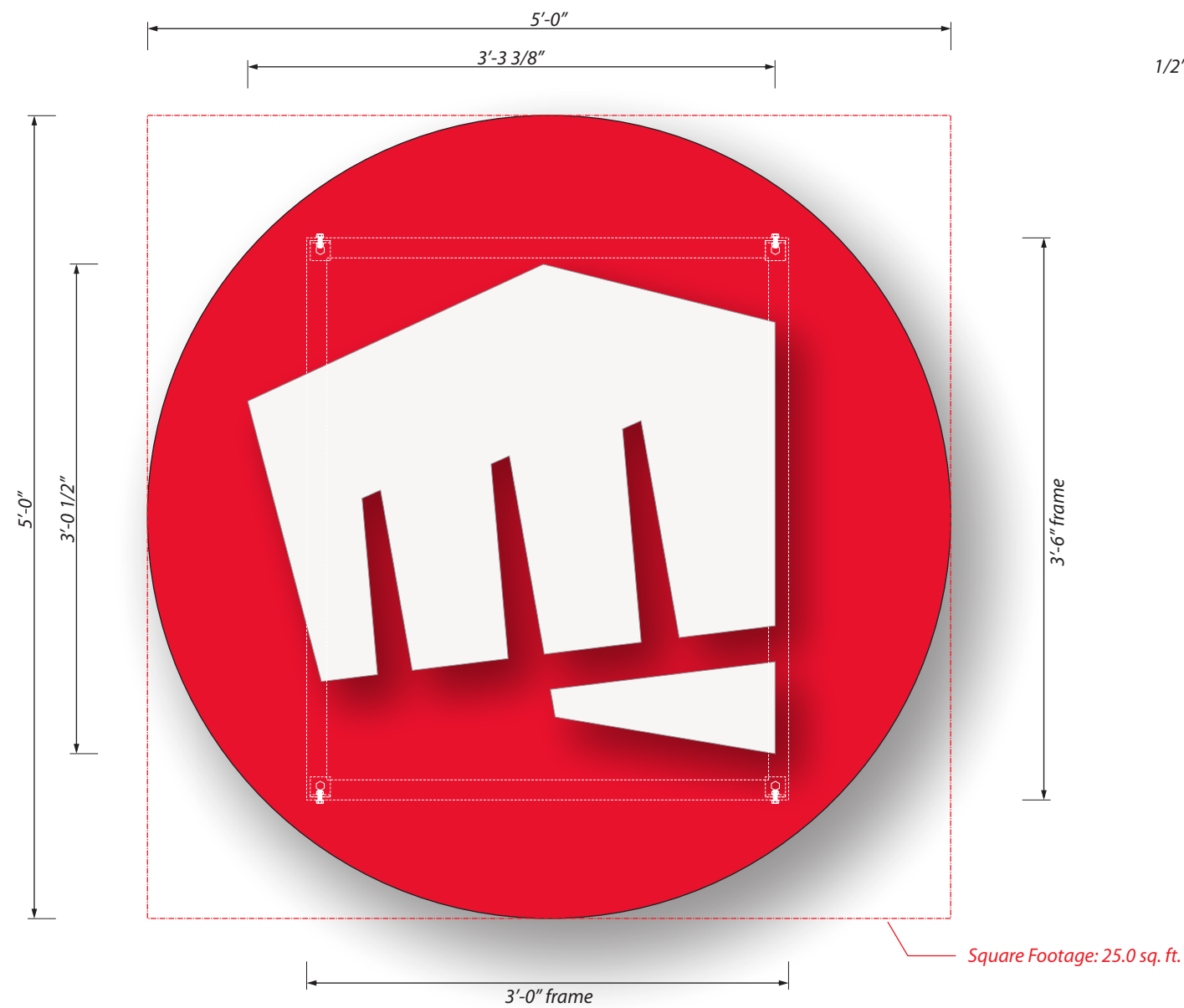
**Existing Conditions**  
Scale: NTS



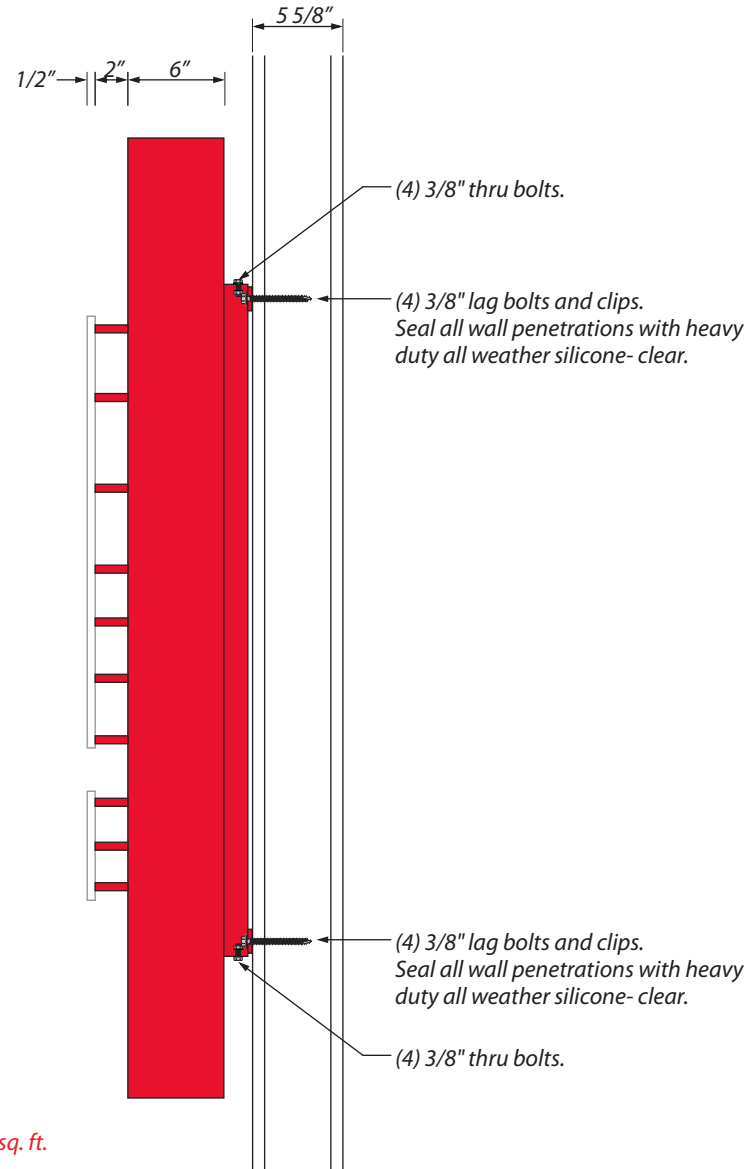
**1 Partial East Elevation View**  
Scale: 1/16"=1'-0"



**1 Partial East Elevation View**  
Scale: 1/16"=1'-0"



**1 Front View- Detail**  
 Scale: 1"=1'-0"



**2 Side View**  
 Scale: 1"=1'-0"

**Sign 2:**

Manufacture and Install (1) Exterior single faced non-illuminated logo cabinet sign.

- A** Oval cabinet to be aluminum construction painted Red to match PMS#185c (satin finish).
- B** Sign face to be .125" aluminum painted Red to match PMS#185c (satin finish).
- C** Sign returns to be .125" aluminum painted Red to match PMS#185c (satin finish).
- D** Graphics to be cut-out of 1/2" thick acrylic painted White (satin finish).
- E** Attach Sign cabinet flush to wall with 1 1/2" x 1 1/2" x 1/4" angle frame painted Red to match PMS#185c (satin finish). (4) 3/8" lag bolts. Seal all wall penetrations with heavy duty all weather silicone- clear.



1541 S. 92nd Place, #B, Seattle, WA 98108  
 P. 206.282.0700  
 www.nationalsigncorp.com

**CLIENT INFORMATION:**

**Riot Games**  
 3003 77TH AVE SE  
 MERCER ISLAND, WA 98049

**REPRESENTATIVE:**

Tom Hubbard

**DESIGNER:**

Mark Mahan

**DATE:**

02/25/24

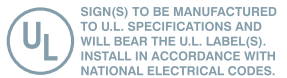
**REVISION:**

1	
2	
3	
4	
5	
6	
7	
8	
9	

**REVIEWED BY:**

F	
C	
S	
P	

This is an original unpublished drawing, created by National Sign Corporation. It is not to be shown to anyone outside your organization, or to be used, reproduced, copied or exhibited in any fashion. Any usage beyond that granted to buyer herein shall require the separate payment of a design and engineering fee to National Sign Corporation.



**SCALE:** As Noted

**DESIGN NUMBER:**

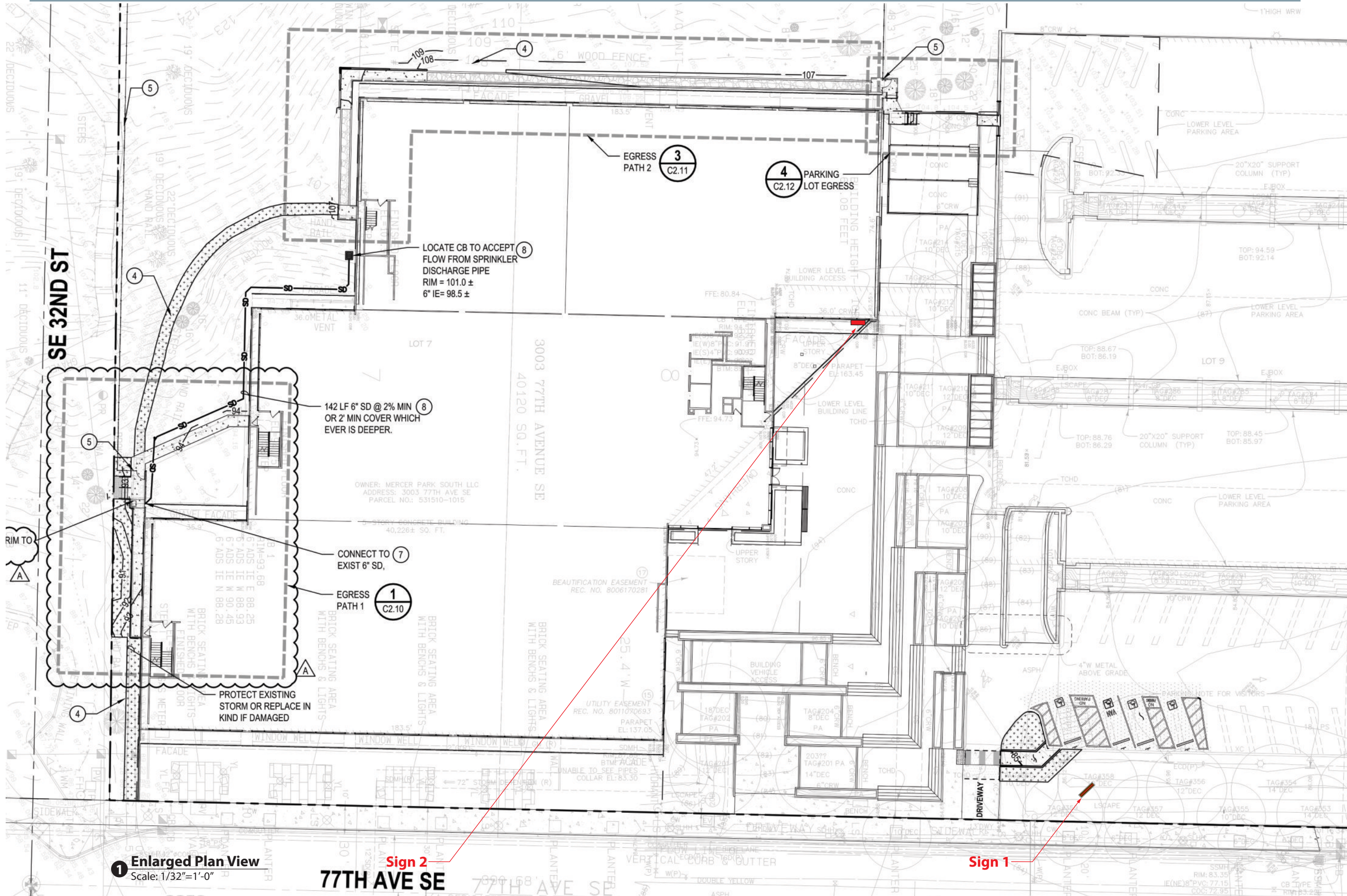
24-00386 V8 FP

**JOB NUMBER:**

24-01764-OS.2

**FINAL PRINT**

# RIOT GAMES SITE PLAN



**1 Enlarged Plan View**  
Scale: 1/32"=1'-0"

**77th Ave SE**

**Sign 2**

**Sign 1**



1541 S. 92nd Place, #B, Seattle, WA 98108  
P. 206.282.0700  
www.nationalsigncorp.com

### CLIENT INFORMATION:

**Riot Games**  
3003 77TH AVE SE  
MERCER ISLAND, WA 98049

### REPRESENTATIVE:

Tom Hubbard

### DESIGNER:

Mark Mahan

### DATE:

02/25/24

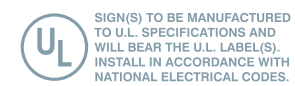
### REVISION:

1	
2	
3	
4	
5	
6	
7	
8	

### REVIEWED BY:

F	
C	
S	
P	

This is an original unpublished drawing, created by National Sign Corporation. It is not to be shown to anyone outside your organization, or to be used, reproduced, copied or exhibited in any fashion. Any usage beyond that granted to buyer herein shall require the separate payment of a design and engineering fee to National Sign Corporation.



**SCALE:** As Noted

**DESIGN NUMBER:**  
24-00386 V8 FP

**JOB NUMBER:**  
24-01764-OS.1 & 24-01764-OS.2

**FINAL PRINT**



# RIOT GAMES SITE PLAN



1541 S. 92nd Place, #B, Seattle, WA 98108  
P. 206.282.0700  
www.nationalsigncorp.com

**CLIENT INFORMATION:**

**Riot Games**  
3003 77TH AVE SE  
MERCER ISLAND, WA 98049

**REPRESENTATIVE:**

Tom Hubbard

**DESIGNER:**

Mark Mahan

**DATE:**

02/25/24

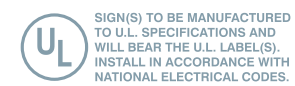
**REVISION:**

1	
2	
3	
4	
5	
6	
7	
8	
9	

**REVIEWED BY:**

F	
C	
S	
P	

This is an original unpublished drawing, created by National Sign Corporation. It is not to be shown to anyone outside your organization, or to be used, reproduced, copied or exhibited in any fashion. Any usage beyond that granted to buyer herein shall require the separate payment of a design and engineering fee to National Sign Corporation.

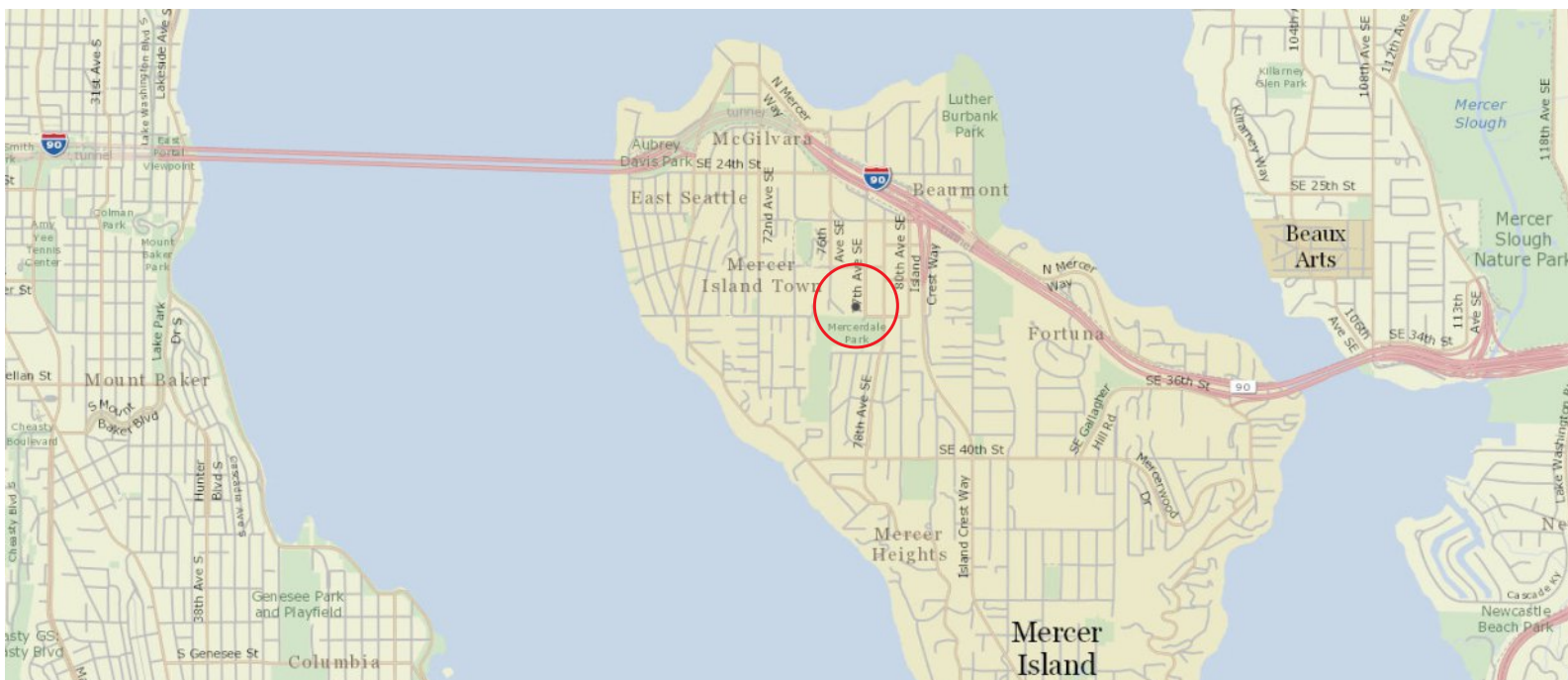


**SCALE:** As Noted

**DESIGN NUMBER:**  
24-00386 V8 FP

**JOB NUMBER:**  
24-01764-OS.1 & 24-01764-OS.2

**FINAL PRINT**



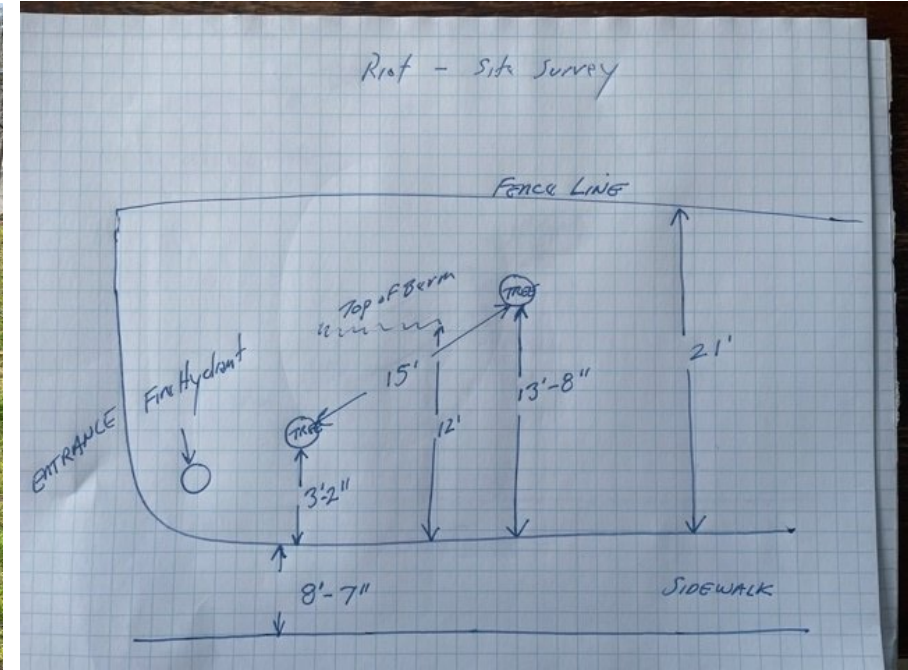
**Vicinity Map**  
Scale: NTS



**Aerial View**  
Scale: NTS

Sign 2      Sign 1





1541 S. 92nd Place, #B, Seattle, WA 98108  
P. 206-282-0700  
www.nationalsigncorp.com

**CLIENT INFORMATION:**

**Riot Games**  
3003 77TH AVE SE  
MERCER ISLAND, WA 98049

**REPRESENTATIVE:**

Tom Hubbard

**DESIGNER:**

Mark Mahan

**DATE:**

02/25/24

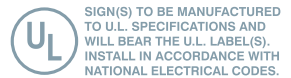
**REVISION:**

1	
2	
3	
4	
5	
6	
7	
8	
9	

**REVIEWED BY:**

F	
C	
S	
P	

This is an original unpublished drawing, created by National Sign Corporation. It is not to be shown to anyone outside your organization, or to be used, reproduced, copied or exhibited in any fashion. Any usage beyond that granted to buyer herein shall require the separate payment of a design and engineering fee to National Sign Corporation.



**SCALE:** As Noted

**DESIGN NUMBER:**

24-00386 V8 FP

**JOB NUMBER:**

24-01764-OS.1

**FINAL PRINT**



**NATIONAL SIGN**  
CORPORATION

1541 S. 92nd Place, #B, Seattle, WA 98108  
P. 206-282-0700  
www.nationalsigncorp.com

**CLIENT INFORMATION:**

**Riot Games**  
3003 77TH AVE SE  
MERCER ISLAND, WA 98049

**REPRESENTATIVE:**

Tom Hubbard

**DESIGNER:**

Mark Mahan

**DATE:**

02/25/24


**REVISION:**

1	
2	
3	
4	
5	
6	
7	
8	
9	

**REVIEWED BY:**

F	
C	
S	
P	

This is an original unpublished drawing, created by National Sign Corporation. It is not to be shown to anyone outside your organization, or to be used, reproduced, copied or exhibited in any fashion. Any usage beyond that granted to buyer herein shall require the separate payment of a design and engineering fee to National Sign Corporation.

 SIGN(S) TO BE MANUFACTURED TO U.L. SPECIFICATIONS AND WILL BEAR THE U.L. LABEL(S). INSTALL IN ACCORDANCE WITH NATIONAL ELECTRICAL CODES.

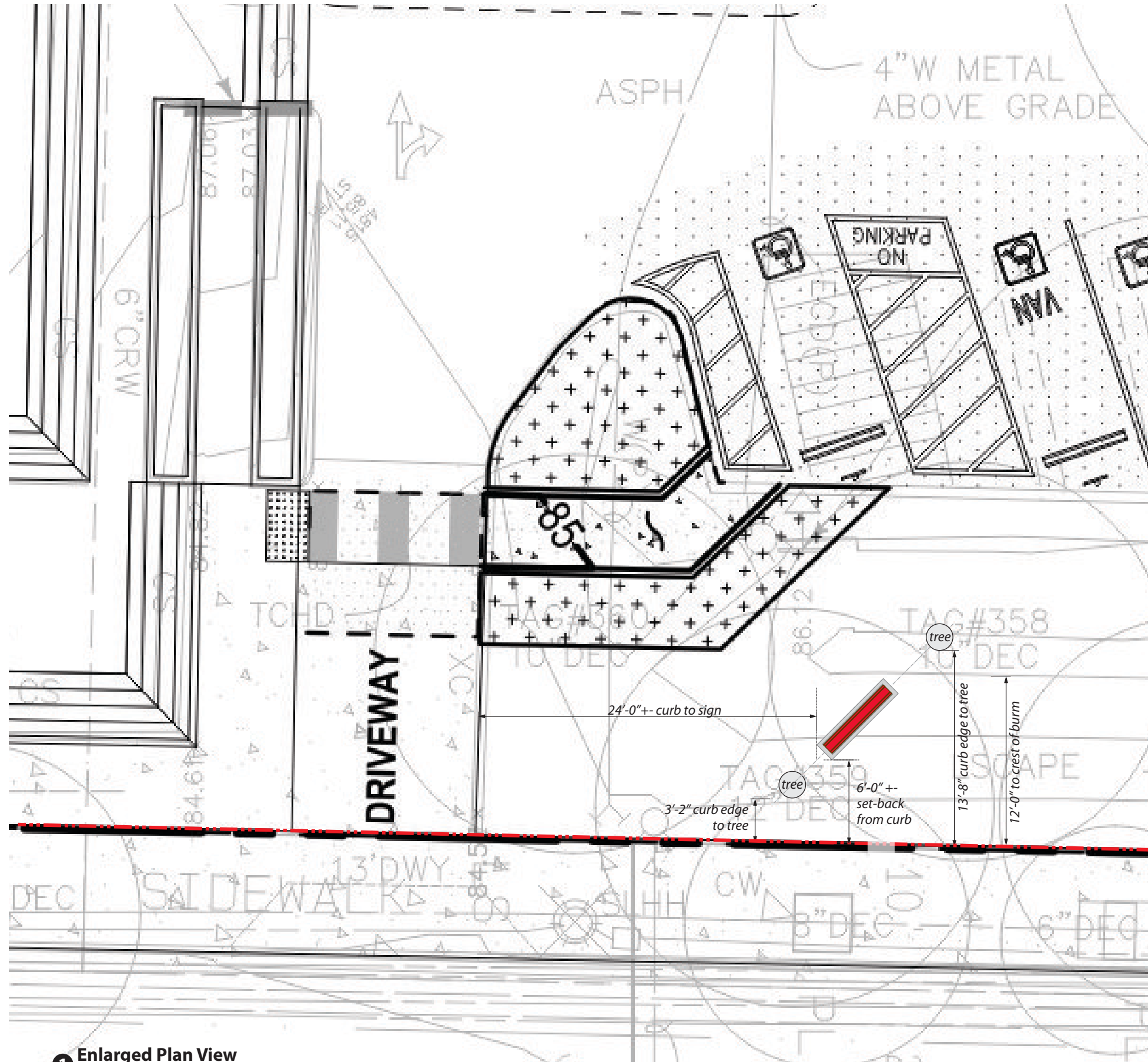
**SCALE:** As Noted

**DESIGN NUMBER:**  
24-00386 V8 FP

**JOB NUMBER:**  
24-01764-OS.2

**FINAL PRINT**





**1 Enlarged Plan View**  
Scale: 1/8"=1'-0"



**Existing Conditions**  
Scale: NTS



**Existing Conditions**  
Scale: NTS



**NATIONAL SIGN**  
CORPORATION

1541 S. 92nd Place, #B, Seattle, WA 98108  
P. 206.282.0700  
www.nationalsigncorp.com

**CLIENT INFORMATION:**

**Riot Games**  
3003 77TH AVE SE  
MERCER ISLAND, WA 98049

**REPRESENTATIVE:**

Tom Hubbard

**DESIGNER:**

Mark Mahan

**DATE:**

02/25/24

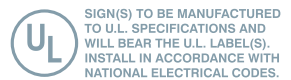
**REVISION:**

1	
2	
3	
4	
5	
6	
7	
8	
9	

**REVIEWED BY:**

F	
C	
S	
P	

This is an original unpublished drawing, created by National Sign Corporation. It is not to be shown to anyone outside your organization, or to be used, reproduced, copied or exhibited in any fashion. Any usage beyond that granted to buyer herein shall require the separate payment of a design and engineering fee to National Sign Corporation.



**SCALE:** As Noted

**DESIGN NUMBER:**  
24-00386 V8 FP

**JOB NUMBER:**  
24-01764-OS.2

**FINAL PRINT**